



Office of the Administrative Director – Financial Services Department

THE JUDICIARY • STATE OF HAWAII • 1111 ALAKEA STREET, 6TH FLOOR • HONOLULU, HAWAII 96813-2807
TELEPHONE (808) 538-5800 • FAX (808) 538-5802

Terri Gearon
FINANCIAL SERVICES DIRECTOR

May 30, 2019

MEMORANDUM

TO WHOM IT MAY CONCERN:

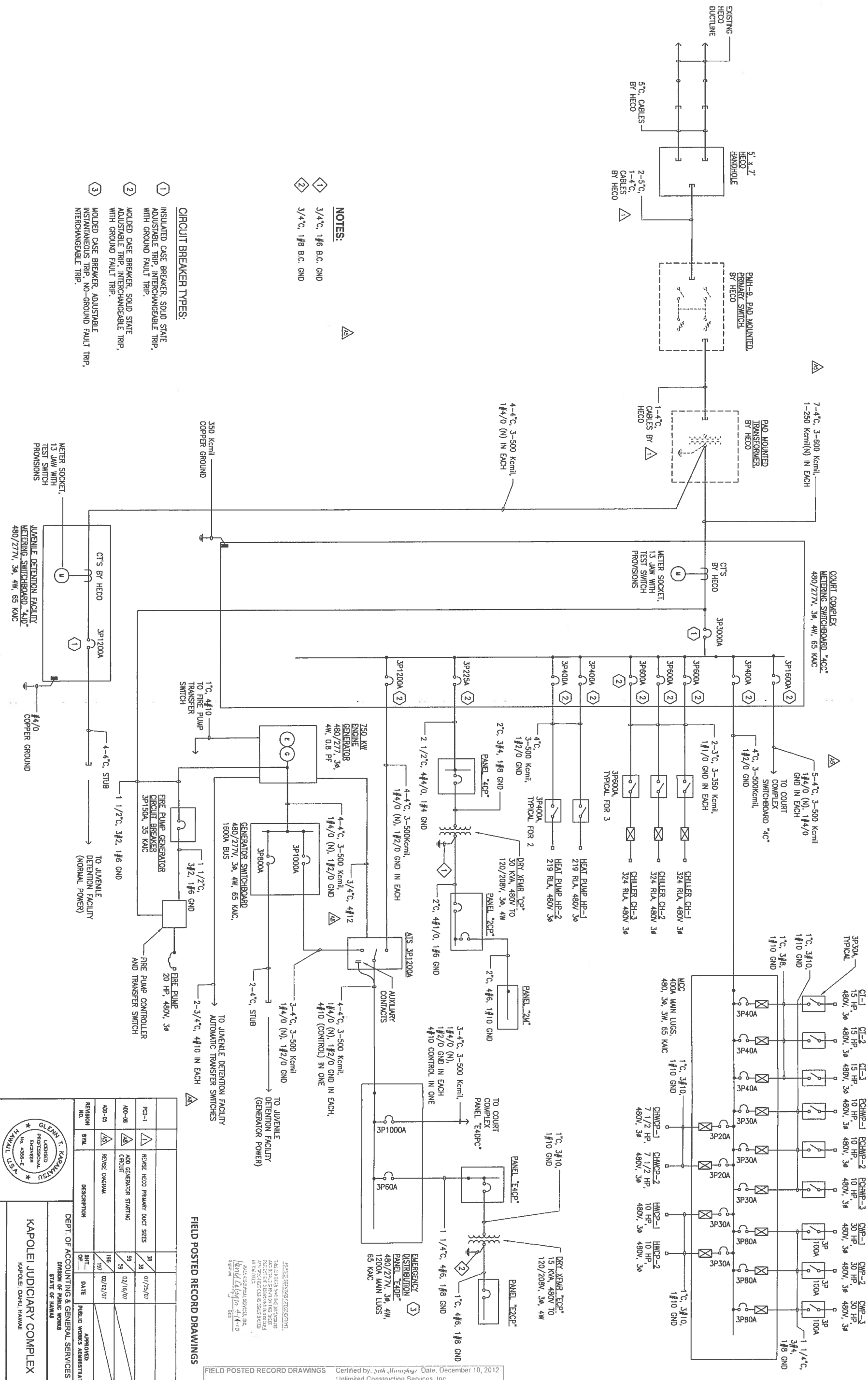
FROM: Terri Gearon, Financial Services Director /s/ Terri Gearon

SUBJECT: ADDENDUM NO. 4
JUDICIARY PROJECT NO. J19313
DESIGN, FURNISH, INSTALL, AND MAINTAIN A PHOTOVOLTAIC SYSTEM
WITH BATTERY STORAGE FOR THE RONALD TY MOON JUDICIARY
COMPLEX IN KAPOLEI

Transmitted herewith is a copy of Addendum No. 4 providing the Central Plant One Line Diagram.

Should you have any technical questions regarding this Addendum, please call the Officer-In-Charge for this project Dee Dee Letts via phone at (808) 538-5990 or via email at deedee.d.letts@courts.hawaii.gov. Other questions may be directed to Kelly Kimura of the Judiciary Contracts & Purchasing Office via phone at (808) 538-5805, or via email Kelly.Y.Kimura@courts.hawaii.gov.

- NOTES:**
- ① 3/4" C, 1#8 B.C. GND
 - ② 3/4" C, 1#8 B.C. GND
- CIRCUIT BREAKER TYPES:**
- ① INSULATED CASE BREAKER, SOLID STATE ADJUSTABLE TRIP, INTERCHANGEABLE TRIP WITH GROUND FAULT TRIP.
 - ② MOLDED CASE BREAKER, SOLID STATE ADJUSTABLE TRIP, INTERCHANGEABLE TRIP WITH GROUND FAULT TRIP.
 - ③ MOLDED CASE BREAKER, ADJUSTABLE INSTANTANEOUS TRIP, NO-GROUND FAULT TRIP, INTERCHANGEABLE TRIP.



A2 CENTRAL PLANT ONE LINE DIAGRAM
NO SCALE

THIS WORK WAS PREPARED BY ME OR UNDER MY SUPERVISION AND I AM A LICENSED PROFESSIONAL ENGINEER IN THE STATE OF HAWAII. I WILL BE UNDER MY OBSERVATION.

GLENN T. KAKIMATSU
LICENSED PROFESSIONAL ENGINEER
No. 4388-E
HAWAII, U.S.A.

KAPOLEI JUDICIARY COMPLEX
KAPOLEI, OAHU, HAWAII

DEPT. OF ACCOUNTING & GENERAL SERVICES
DIVISION OF PUBLIC WORKS
STATE OF HAWAII

DESIGNED BY: ECS, INC.
CHECKED BY: ECS, INC.
DATE: 12-21-2003

DATE: MAY 2008
OF: 1021

E-C601

