



**Office of the Administrative Director – Financial Services Department**

THE JUDICIARY • STATE OF HAWAII • 1111 ALAKEA STREET, 6<sup>TH</sup> FLOOR • HONOLULU, HAWAII 96813-2807  
TELEPHONE (808) 538-5800 • FAX (808) 538-5802

**Rodney A. Maile**  
ADMINISTRATIVE DIRECTOR

**Dean H. Seki**  
FINANCIAL SERVICES DIRECTOR

**Iris T. Murayama**  
DEPUTY ADMINISTRATIVE DIRECTOR

April 29, 2016

MEMORANDUM

TO WHOM IT MAY CONCERN:

FROM: Dean H. Seki, Financial Services Director

SUBJECT: ADDENDUM NO. 2  
JUDICIARY PROJECT NO. J17003  
KA`AHUMANU HALE  
COURTROOM-CHAMBER CEILINGS & KITCHENETTES  
PROJECT IDENTIFIER: JUD 1516-01-009  
THE JUDICARY, STATE OF HAWAII, TAX MAP KEY: 2-1-030:003

Transmitted herewith is a copy of Addendum No. 2 providing the change in plans for the above project which were noted during the mandatory walk through held on April 22, 2016.

Should you have any technical questions regarding this Addendum, please call the Officer-In-Charge for this project Dee Dee Letts, Office of Project Management, Ph. (808)538-5991 or [deedee.d.letts@courts.hawaii.gov](mailto:deedee.d.letts@courts.hawaii.gov). Other questions may be directed to Deepa P. Sheehan of the Judiciary Contracts & Purchasing Office at (808)538-5805, or [Deepa.P.Sheehan@courts.hawaii.gov](mailto:Deepa.P.Sheehan@courts.hawaii.gov)

/s/ Dean H. Seki

Dean H. Seki

Enc.: Ka'ahumanu Hale Courtroom–Chamber Ceilings & Kitchenettes-Change in Plans

## **ADDENDUM NO. 2**

### **JUDICIARY PROJECT NO. J17003**

#### **KA`AHUMANU HALE COURTROOM-CHAMBER CEILINGS & KITCHENETTES**

#### **PROJECT IDENTIFIER: JUD 1516-01-009**

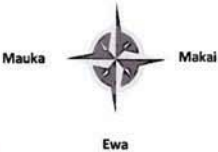
**Addendum #2** incorporates changes to details that were noticed during the mandatory walk through conducted at the project site on April 22, 2016.

Specifically, the 4<sup>th</sup> page of the drawing packet has been amended to show existing monitors mounted on the ceiling in three (3) courtrooms.

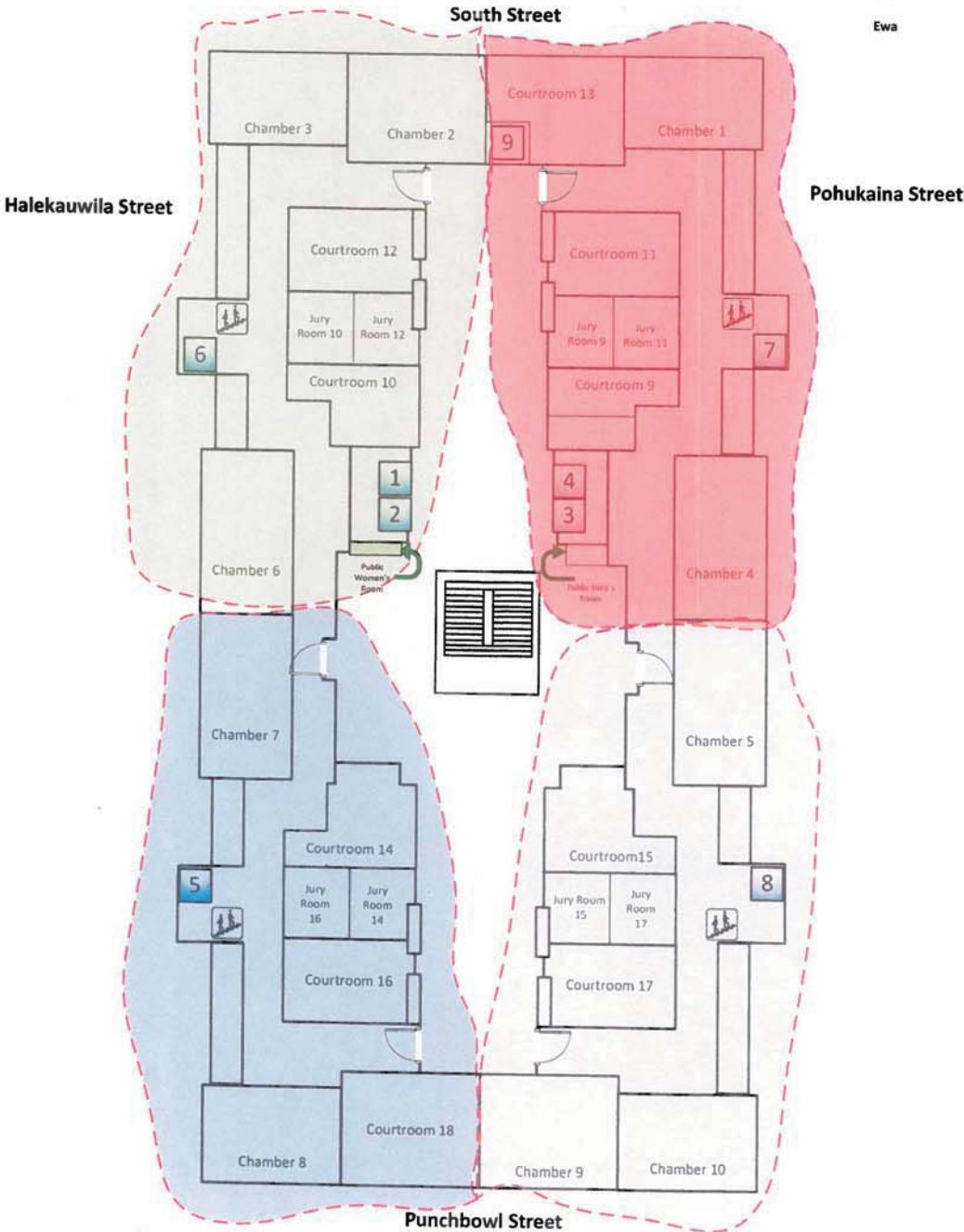
The description of this change to the drawing has been noted with a “cloud” around the information added.

Ka'ahumanu Hale  
Fourth Floor

Diamond Head



Project Contract Limits



Legend:

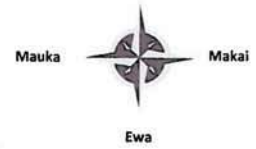
- Stairs
- Elevator
- Diamond Head/Mauka Project Limit
- Diamond Head/Makai Project Limit
- EWA/Mauka Project Limit
- EWA/Makai Project Limit

Men's and Women's Public Restrooms are Also Clearly Marked

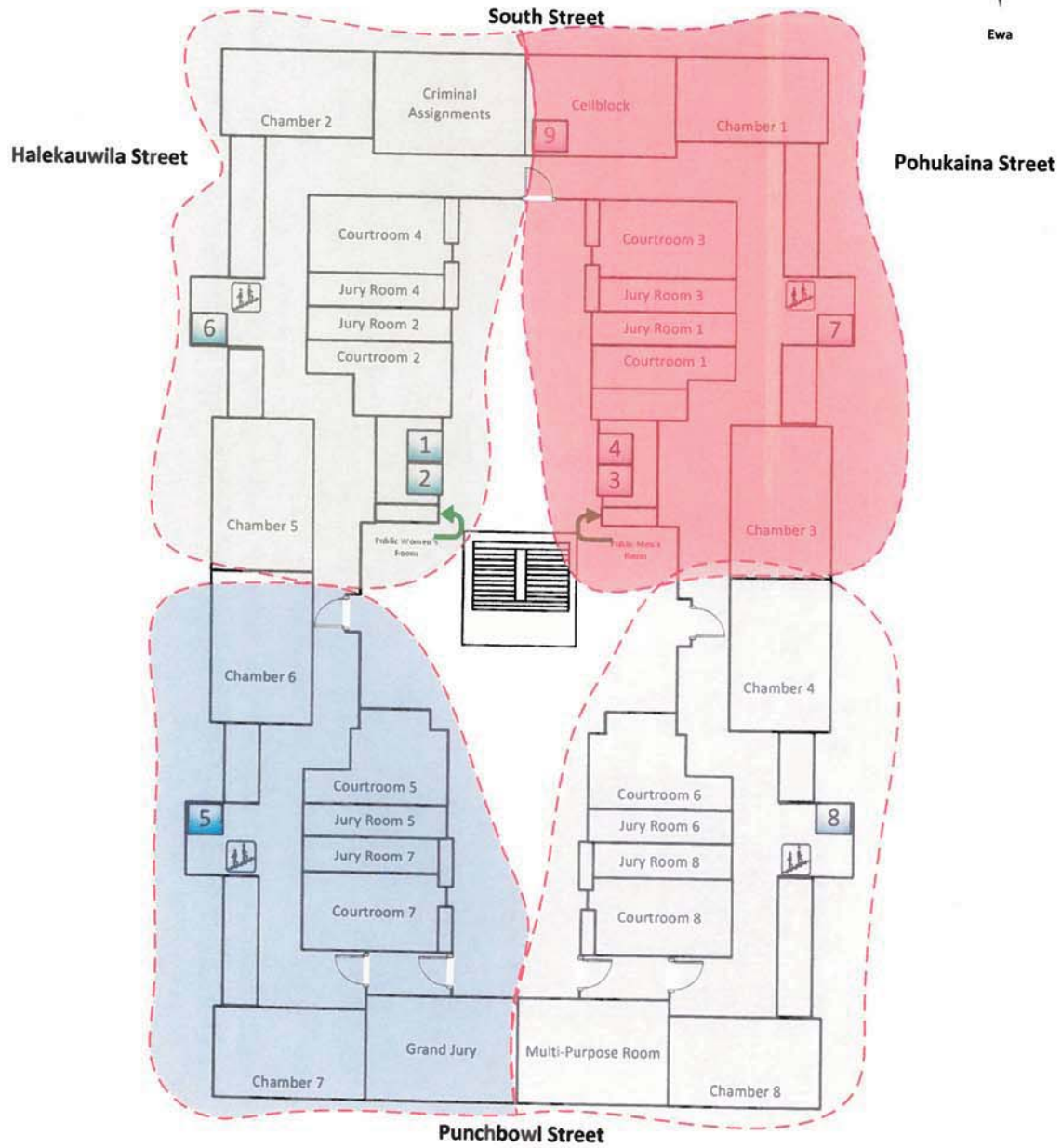
Drawing Not to Scale

# Ka`ahumanu Hale Third Floor

Diamond Head



## Project Contract Limits



### Legend:



Stairs



Elevator



Diamond Head/  
Mauka  
Project Limit



Diamond Head/  
Makai Project Limit



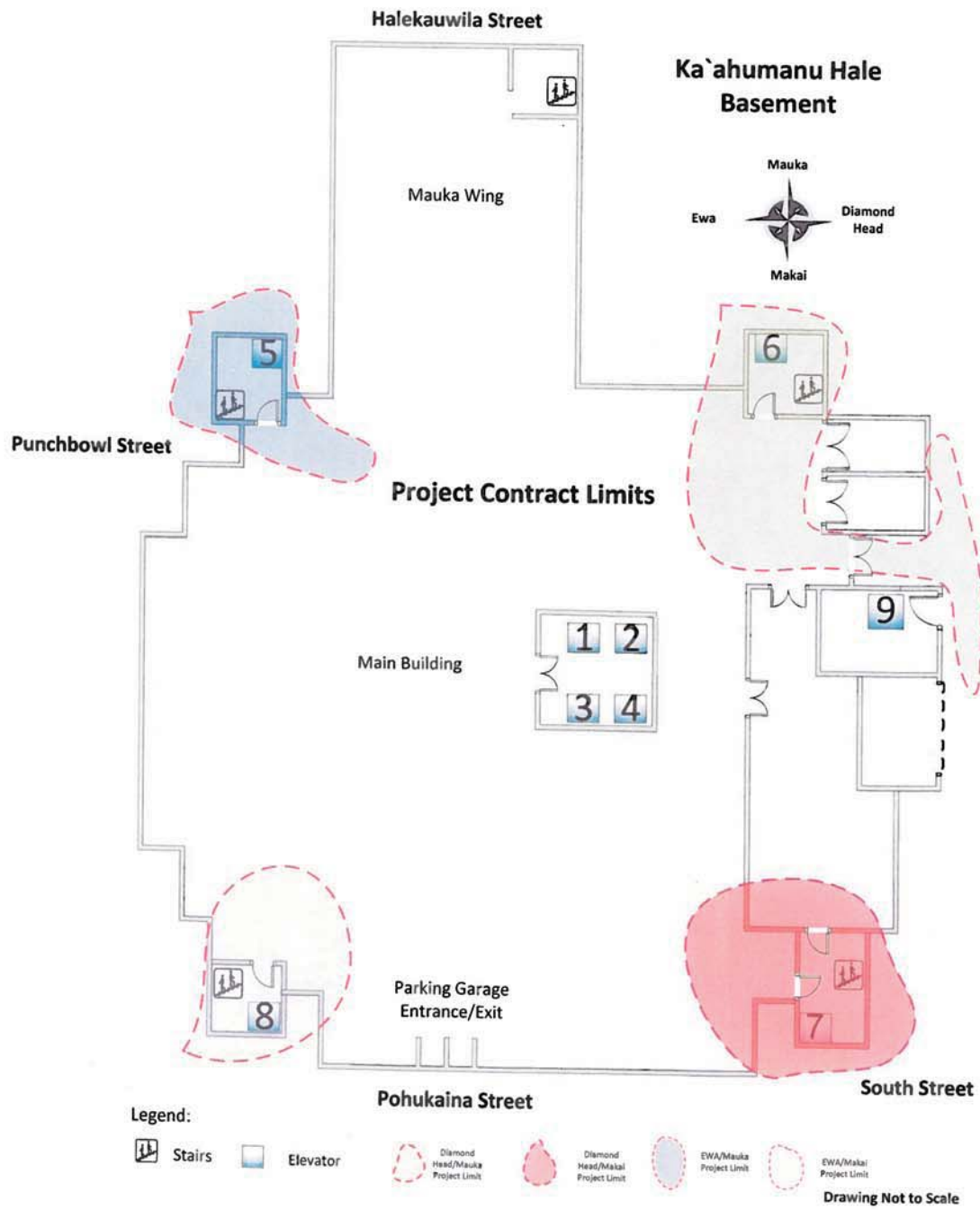
EWA/Mauka  
Project Limit

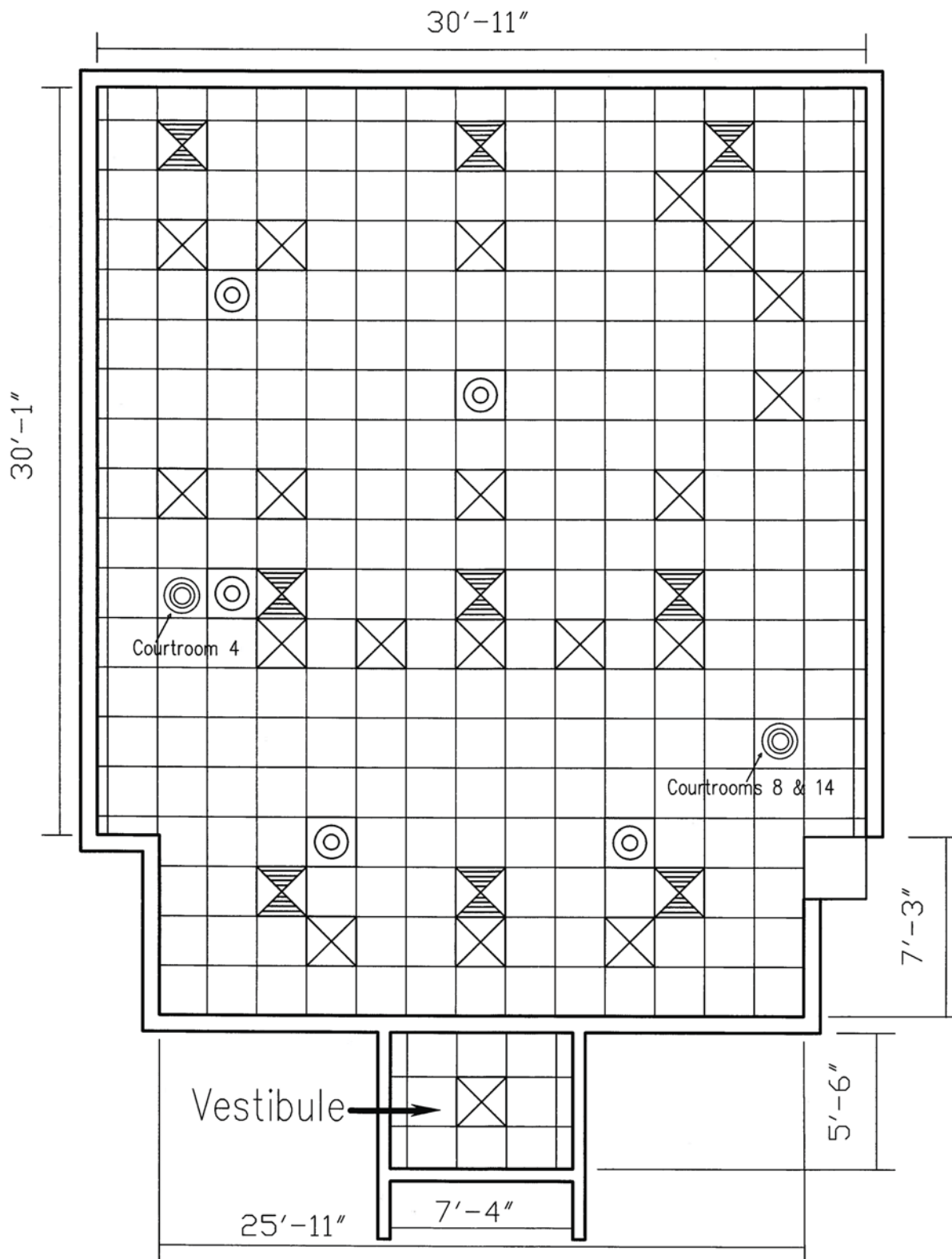


EWA/Makai Project Limit

Men's and Women's Public Restrooms are Also Clearly Marked

Drawing Not to Scale



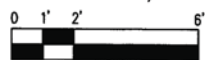


# Ka'ahumanu Hale Courtroom & Vestibule Ceilings

Judiciary Project Number: 1516-01-009

Courtrooms 1, ④ 5, ⑥ 9, 12, ⑭ 17

Scale: 1/4" = 1'-0"



④ Courtrooms #4, #8 and #14 Only – Existing Monitor Suspended from Concrete Ceiling to Remain. Protect Monitor or Temporarily Remove and Re-Install after Work.



Existing Return A/C Register



Existing Supply A/C Dispenser

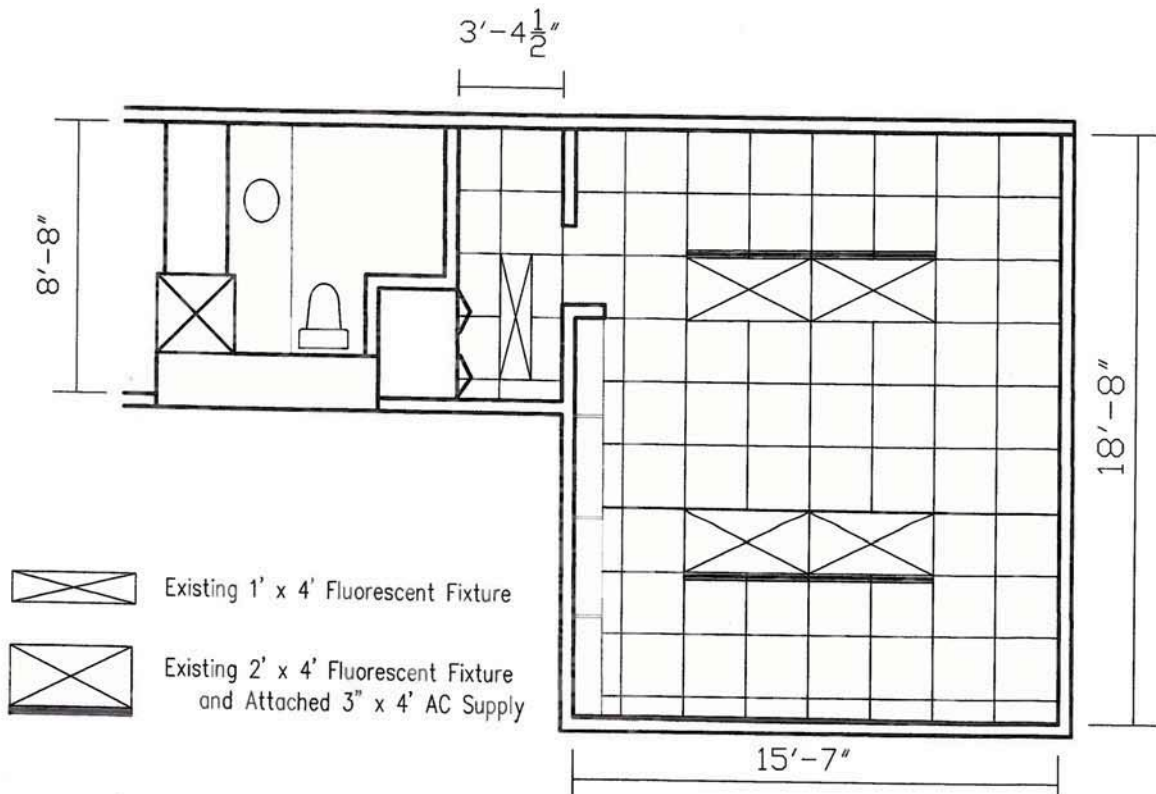


Existing 2' x 2' Fluorescent Fixture



Existing Audio Speaker



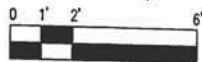


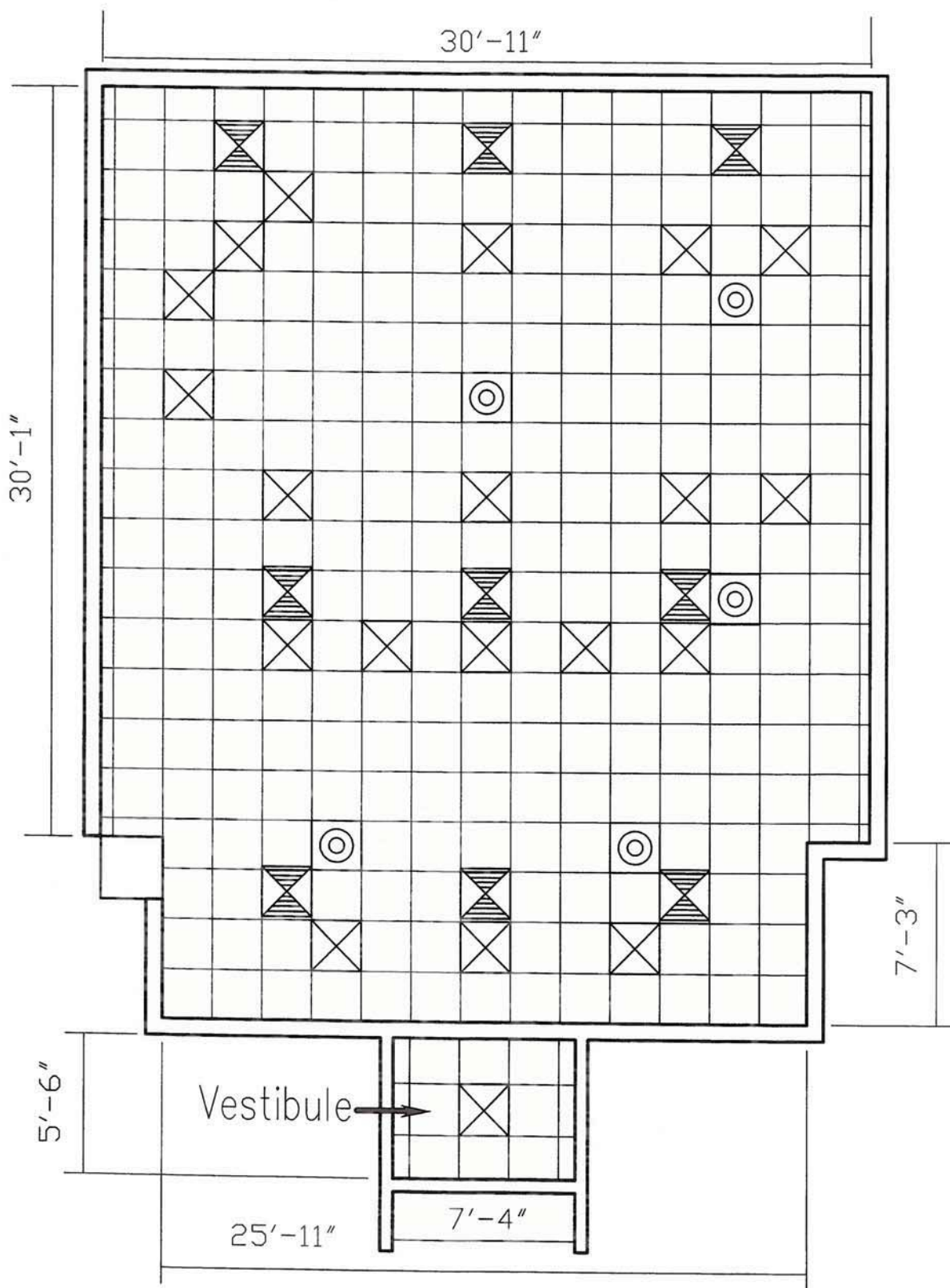
# Ka'ahumanu Hale Chambers Ceilings

Judiciary Project Number: 1516-01-009

Judge's Chambers 1, 4, 5, 8, 9, 12, 14, 17

Scale: 1/4" = 1'-0"





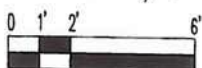
# Ka'ahumanu Hale Courtroom & Vestibule Ceilings

Judiciary Project Number: 1516-01-009

Courtrooms 2, 3, 6, 7, 10, 15, 16

and Vestibule 11 Only, Courtroom Ceiling Completed Earlier

Scale: 1/4" = 1'-0"



Existing Return A/C Register



Existing Supply A/C Dispenser

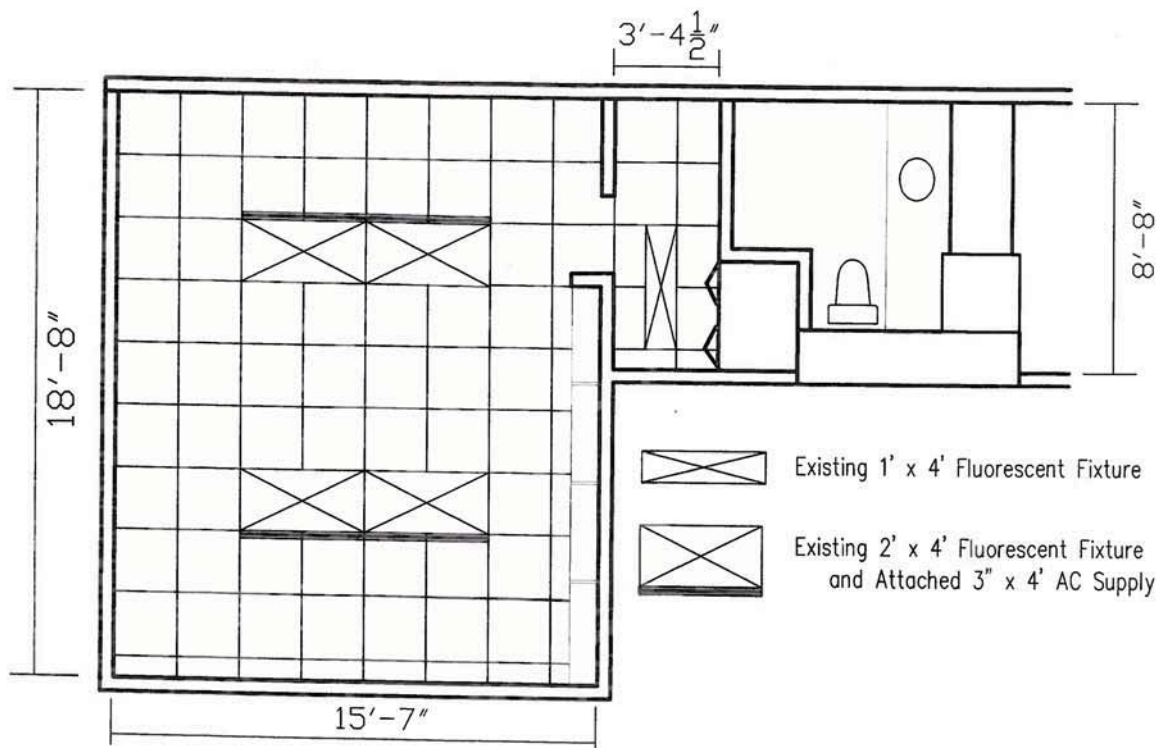


Existing Audio Speaker



Existing 2' x 2' Fluorescent Fixture



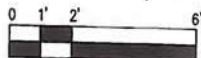


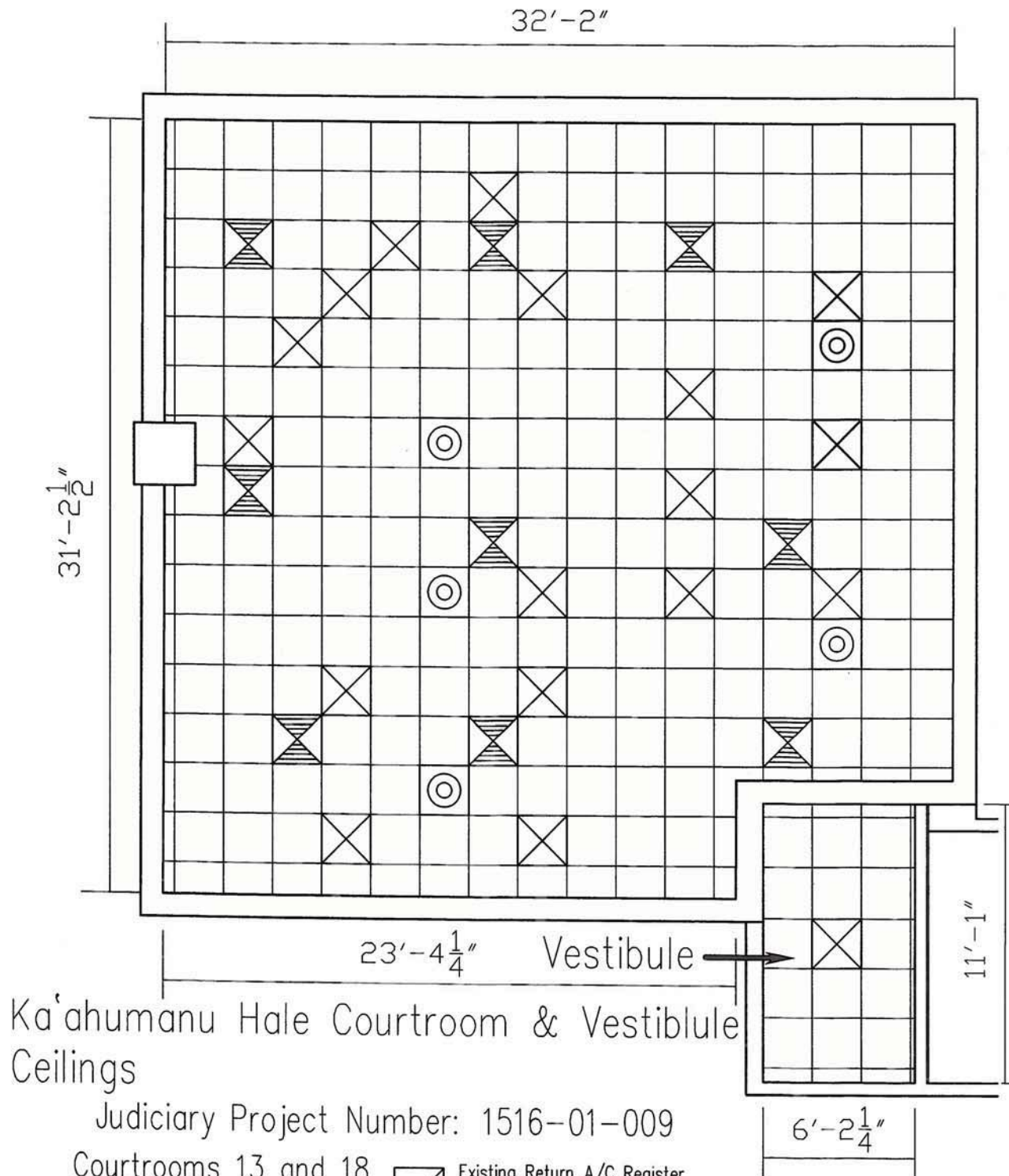
# Ka'ahumanu Hale Chamber Ceilings

Judiciary Project Number: 1515-01-009

Judge's Chambers 2, 3, 6, 7, 10, 11, 15, 16

Scale: 1/4" = 1'-0"





Existing Return A/C Register



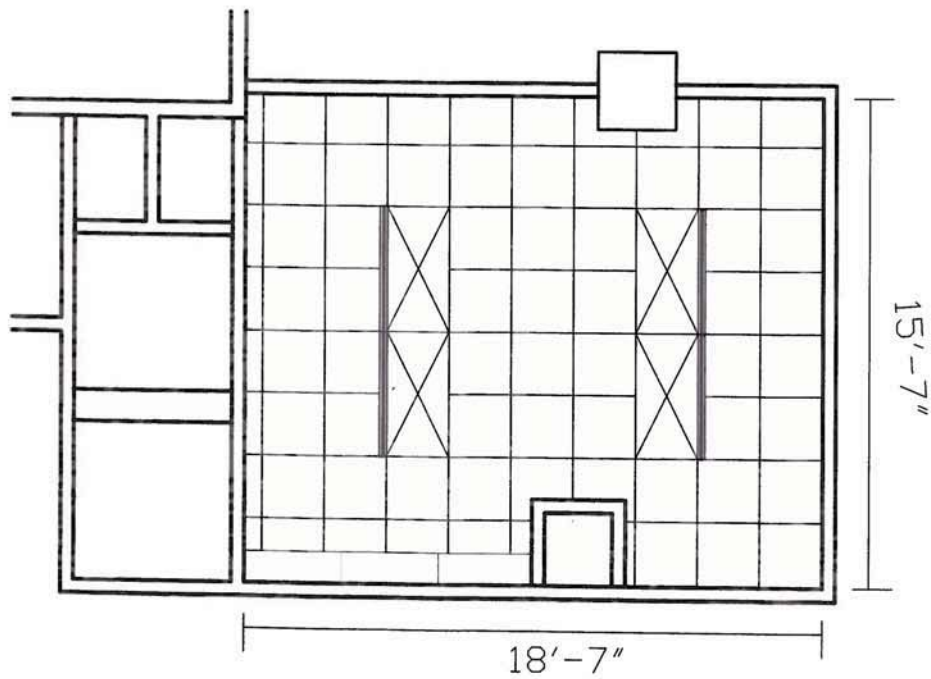
Existing Supply A/C Dispenser



Existing 2' x 2' Fluorescent Fixture



Existing Audio Speaker

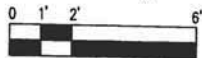


# Ka'ahumanu Hale Chamber Ceilings

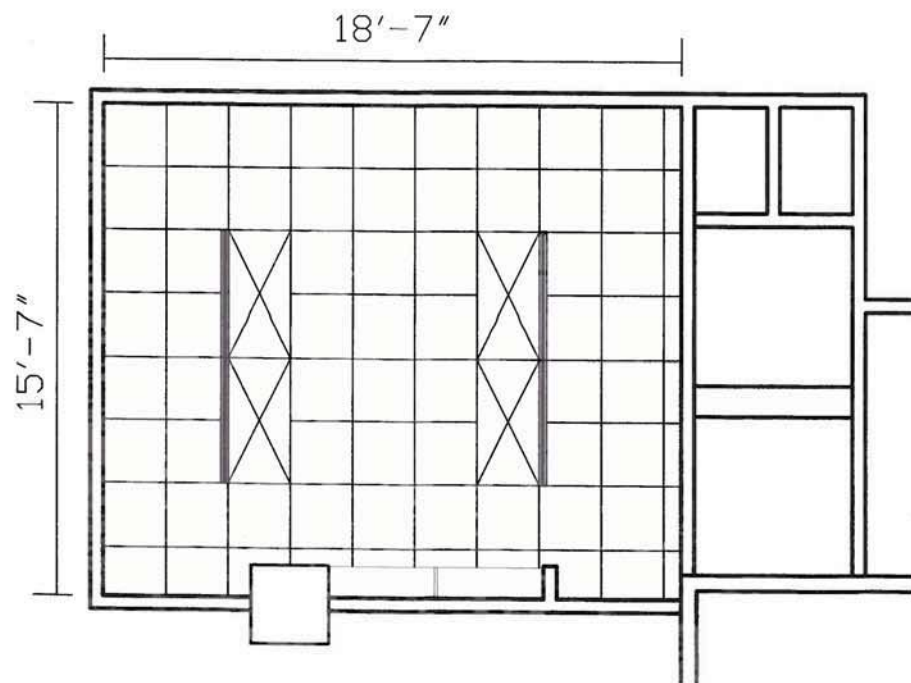
Judiciary Project Number: 1516-01-009

Judge's Chamber 13

Scale: 1/4" = 1'-0"



Existing 2' x 4' Fluorescent Fixture  
and Attached 3" x 4' AC Supply



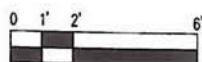
# Ka'ahumanu Hale Chamber Ceilings

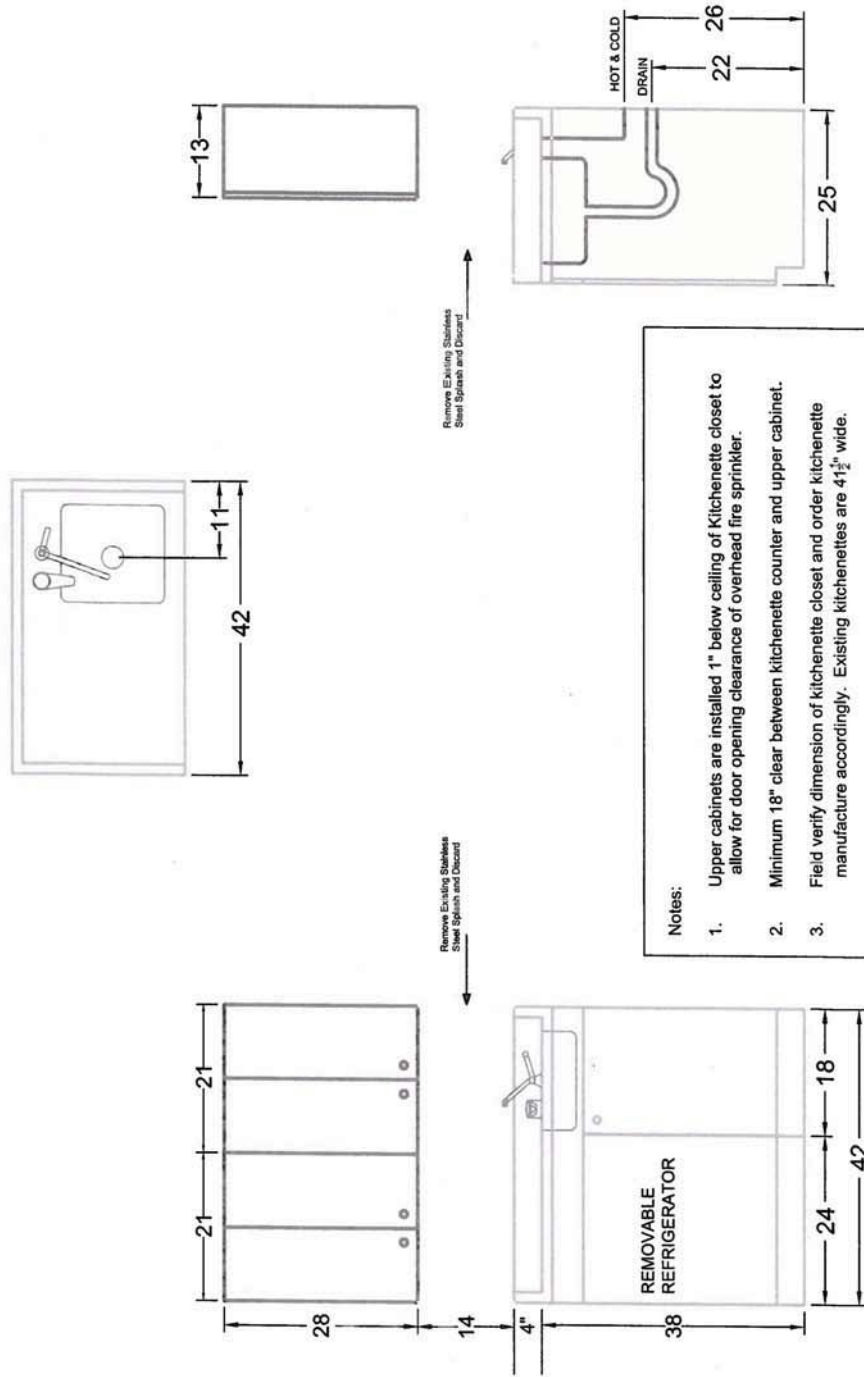
Judiciary Project Number: 1516-01-009

Judge's Chamber 18  
 Scale:  $1/4" = 1'-0"$



Existing 2' x 4' Fluorescent Fixture  
 and Attached 3' x 4' AC Supply





- Notes:
1. Upper cabinets are installed 1" below ceiling of Kitchenette closet to allow for door opening clearance of overhead fire sprinkler.
  2. Minimum 18" clear between kitchenette counter and upper cabinet.
  3. Field verify dimension of Kitchenette closet and order kitchenette manufacture accordingly. Existing kitchenettes are 41 $\frac{1}{2}$ " wide.

<b>ACME KITCHENETTES CORP</b> Judiciary Project Number: 1516-01-009	DATE: 2/19/2016	DESCRIPTION <b>RS9Y-42 (Refrigerator, Sink, Faucet Hot Water Dispenser)</b>
--	-----------------	--