



Office of the Administrative Director – Financial Services Department

THE JUDICIARY • STATE OF HAWAII • 1111 ALAKEA STREET, 6TH FLOOR • HONOLULU, HAWAII 96813-2807
TELEPHONE (808) 538-5800 • FAX (808) 538-5802

Rodney A. Maile
ADMINISTRATIVE DIRECTOR

Dean H. Seki
FINANCIAL SERVICES DIRECTOR

Iris T. Murayama
DEPUTY ADMINISTRATIVE DIRECTOR

April 18, 2016

MEMORANDUM

TO WHOM IT MAY CONCERN:

FROM: Dean H. Seki, Financial Services Director

SUBJECT: ADDENDUM NO. 1
JUDICIARY PROJECT NO. J17003
KA`AHUMANU HALE
COURTROOM-CHAMBER CEILINGS & KITCHENETTES
PROJECT IDENTIFIER: JUD 1516-01-009
THE JUDICARY, STATE OF HAWAII, TAX MAP KEY: 2-1-030:003

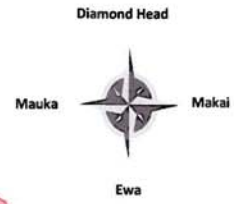
Transmitted herewith is a copy of Addendum No. 1 providing the plans for the above project which were inadvertently omitted from the initial Solicitation Documents.

Should you have any technical questions regarding this Addendum, please call the Officer-In-Charge for this project Dee Dee Letts, Office of Project Management, Ph. (808)538-5991 or deedee.d.letts@courts.hawaii.gov. Other questions may be directed to Deepa P. Sheehan of the Judiciary Contracts & Purchasing Office at (808)538-5805, or Deepa.P.Sheehan@courts.hawaii.gov

Enc.: Ka'ahumanu Hale Courtroom – Chamber Ceilings & Kitchenettes Plans

Ka'ahumanu Hale Fourth Floor

Project Contract Limits



Legend:



Stairs



Elevator

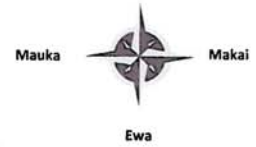


Men's and Women's Public Restrooms are Also Clearly Marked

Drawing Not to Scale

Ka'ahumanu Hale Third Floor

Diamond Head



Project Contract Limits



Legend:



Stairs



Elevator



Diamond Head/
Mauka
Project Limit



Diamond Head/
Makai
Project Limit



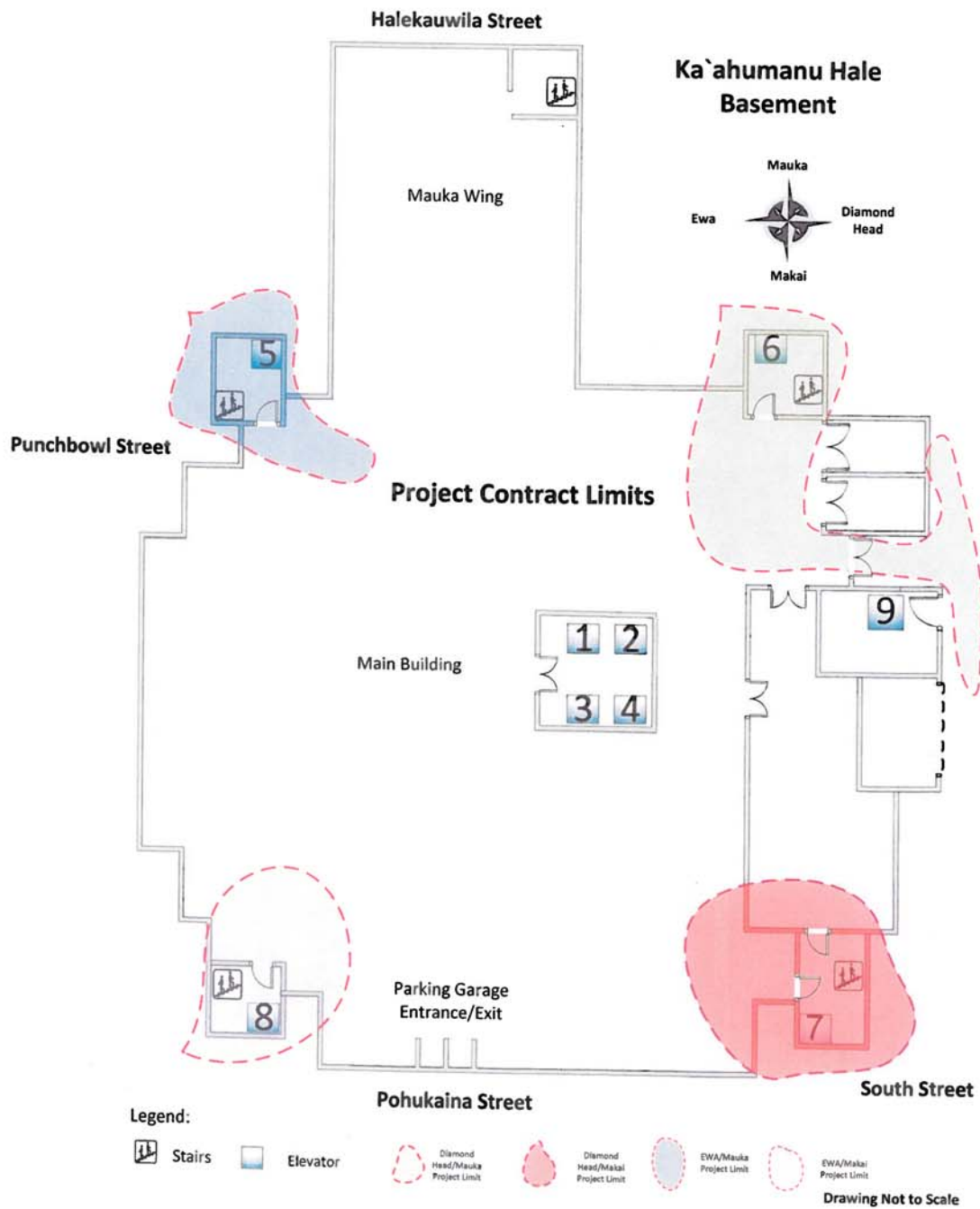
EWA/Mauka
Project Limit

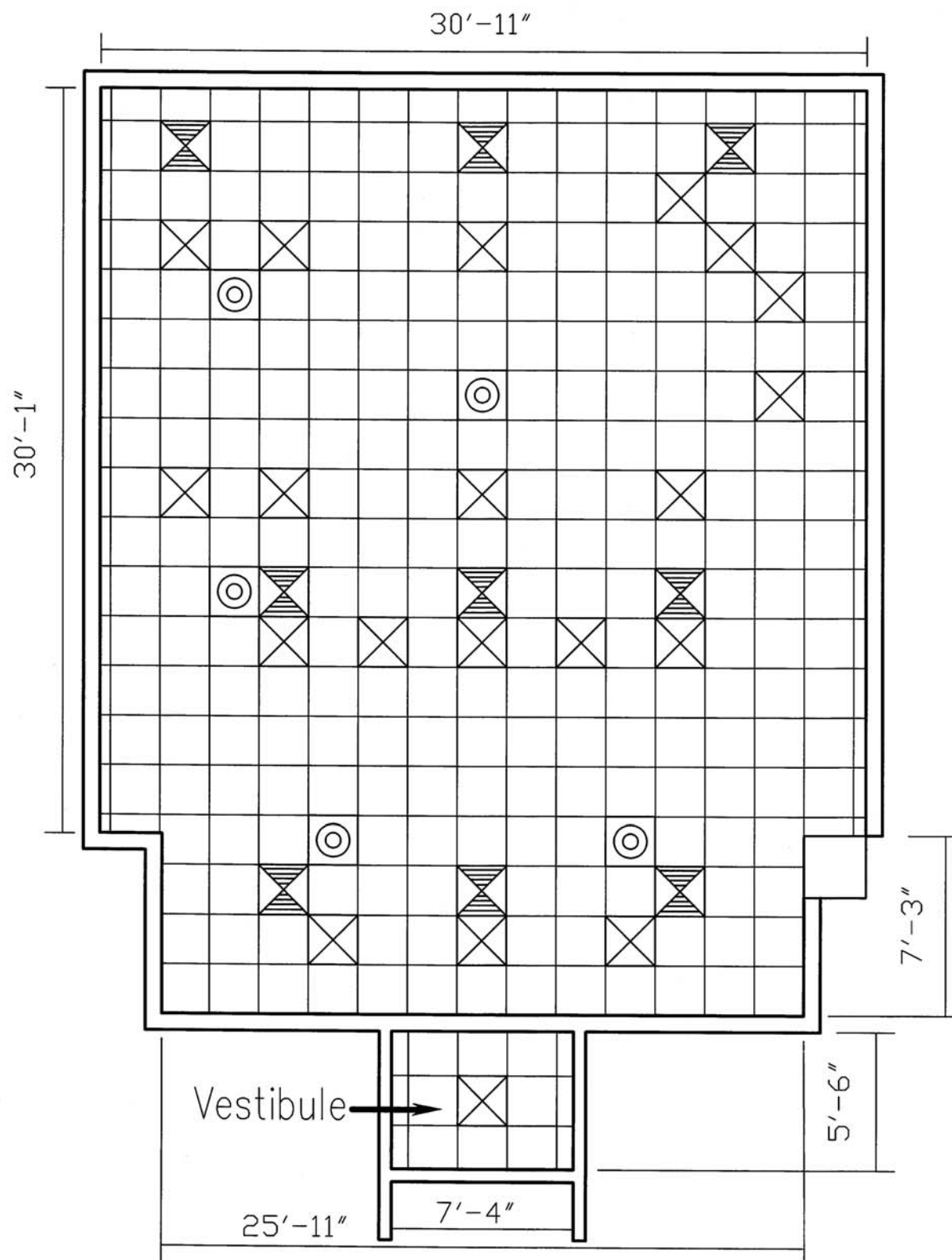


EWA/Makai
Project Limit

Men's and Women's Public Restrooms are Also Clearly Marked

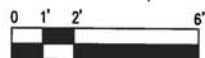
Drawing Not to Scale







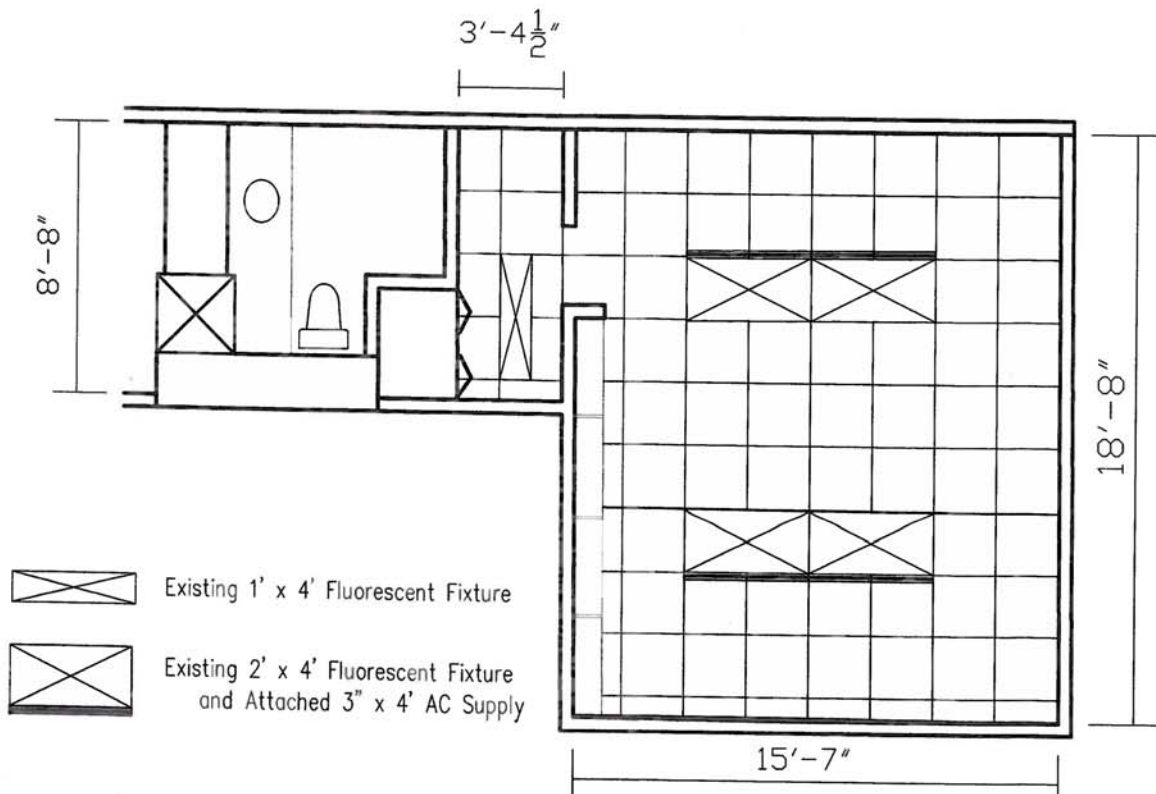


Ka'ahumanu Hale Courtroom & Vestibule Ceilings Judiciary Project Number: 1516-01-009 Courtrooms 1, 4, 5, 8, 9, 12, 14, 17

Scale: 1/4" = 1'-0"



-  Existing Return A/C Register
-  Existing Supply A/C Dispenser
-  Existing 2' x 2' Fluorescent Fixture
-  Existing Audio Speaker



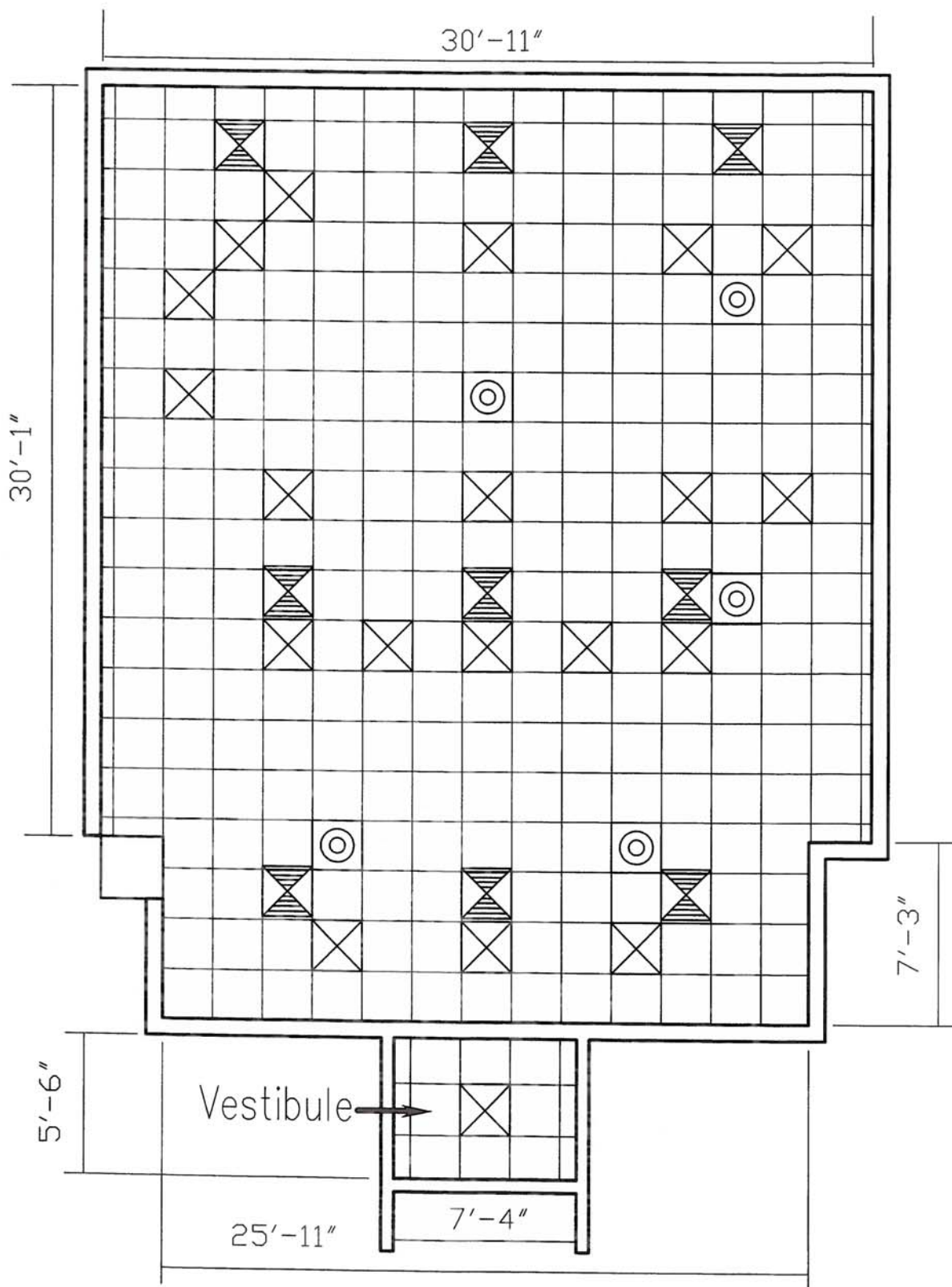
Ka'ahumanu Hale Chambers Ceilings

Judiciary Project Number: 1516-01-009

Judge's Chambers 1, 4, 5, 8, 9, 12, 14, 17

Scale: 1/4" = 1'-0"





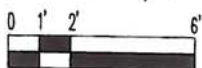
Ka'ahumanu Hale Courtroom & Vestibule Ceilings

Judiciary Project Number: 1516-01-009

Courtrooms 2, 3, 6, 7, 10, 15, 16

and Vestibule 11 Only, Courtroom Ceiling Completed Earlier

Scale: 1/4" = 1'-0"



Existing Return A/C Register



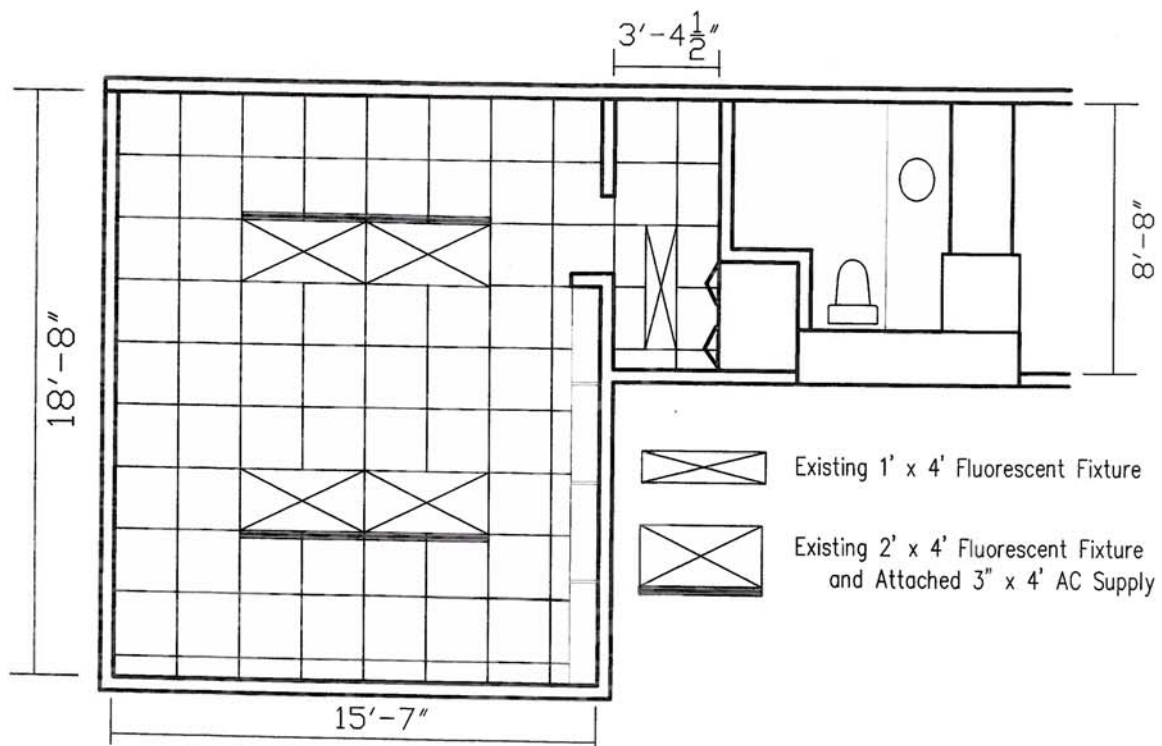
Existing Supply A/C Dispenser



Existing Audio Speaker



Existing 2' x 2' Fluorescent Fixture

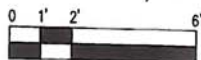


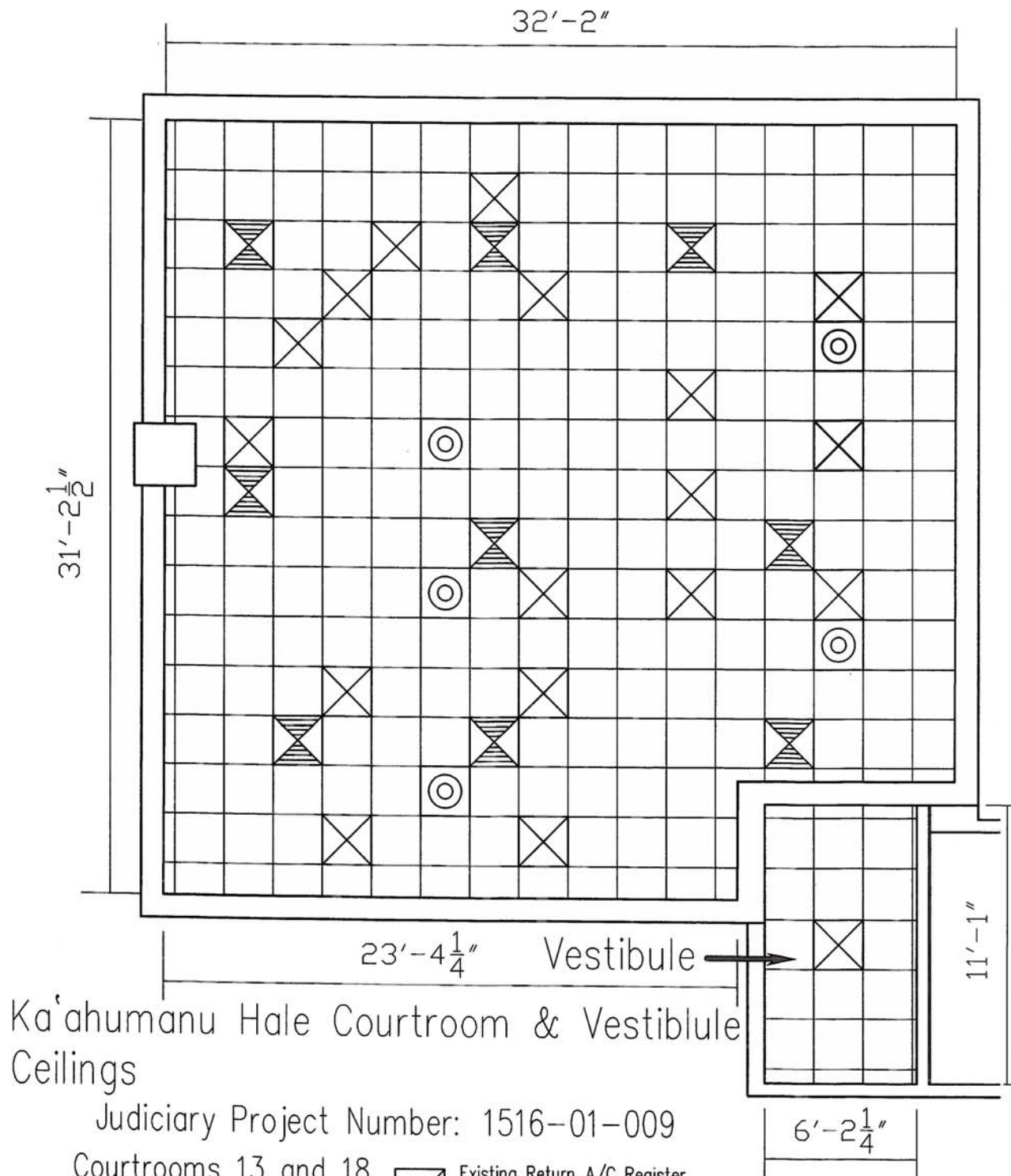
Ka'ahumanu Hale Chamber Ceilings





Judiciary Project Number: 1515-01-009

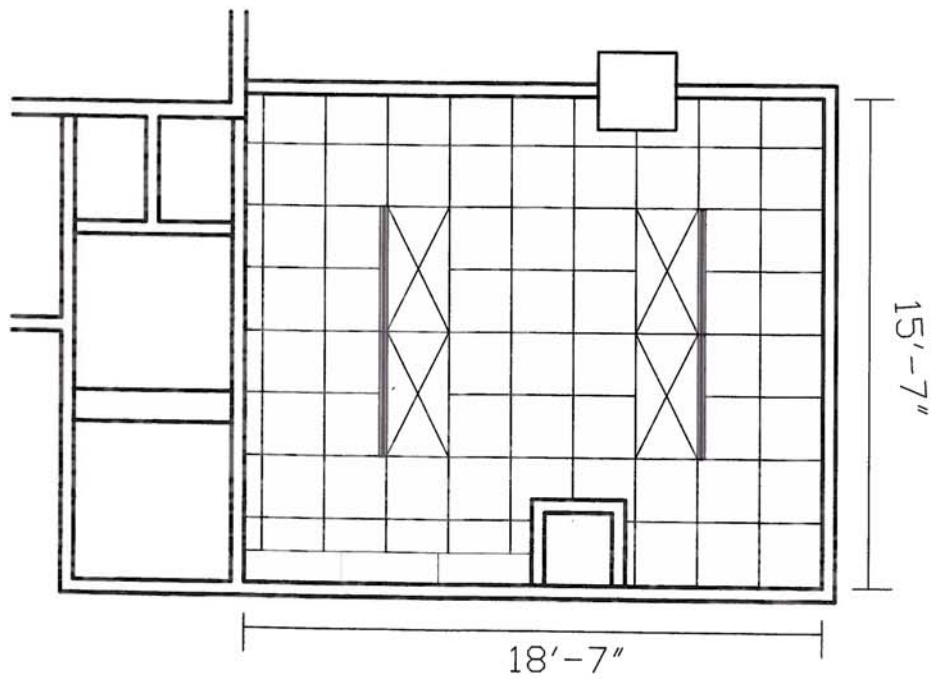
Judge's Chambers 2, 3, 6, 7, 10, 11, 15, 16

Scale: 1/4" = 1'-0"





-  Existing Return A/C Register
-  Existing Supply A/C Dispenser
-  Existing 2' x 2' Fluorescent Fixture
-  Existing Audio Speaker



Ka'ahumanu Hale Chamber Ceilings

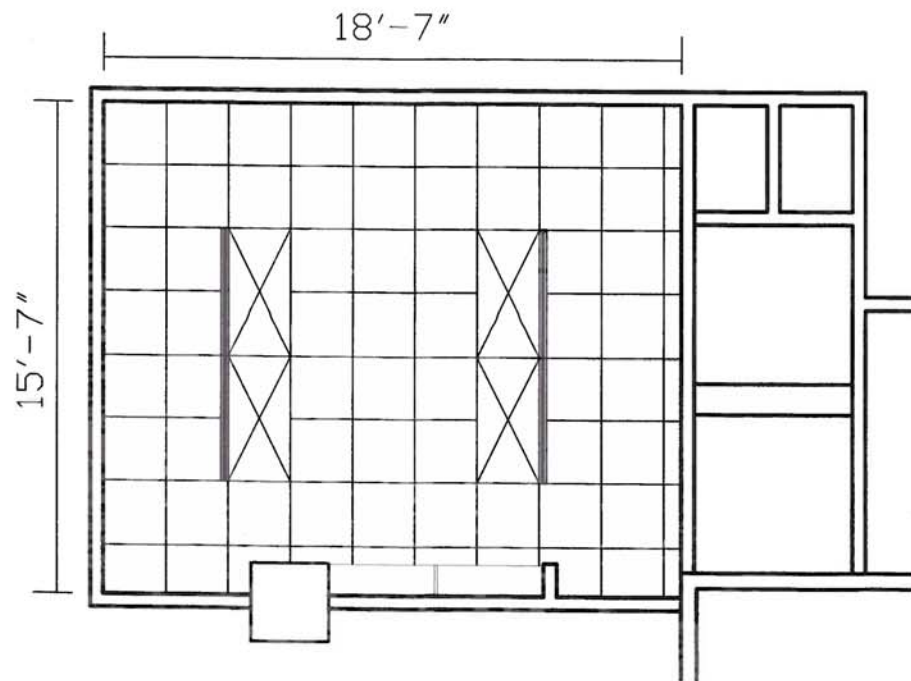
Judiciary Project Number: 1516-01-009

Judge's Chamber 13

Scale: 1/4" = 1'-0"



Existing 2' x 4' Fluorescent Fixture
and Attached 3' x 4' AC Supply



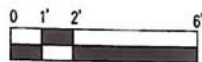
Ka'ahumanu Hale Chamber Ceilings

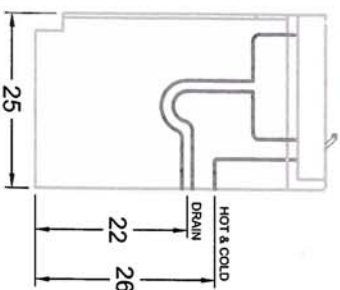
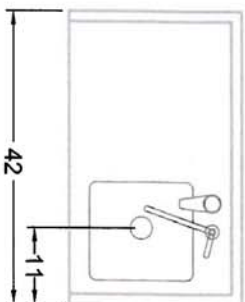
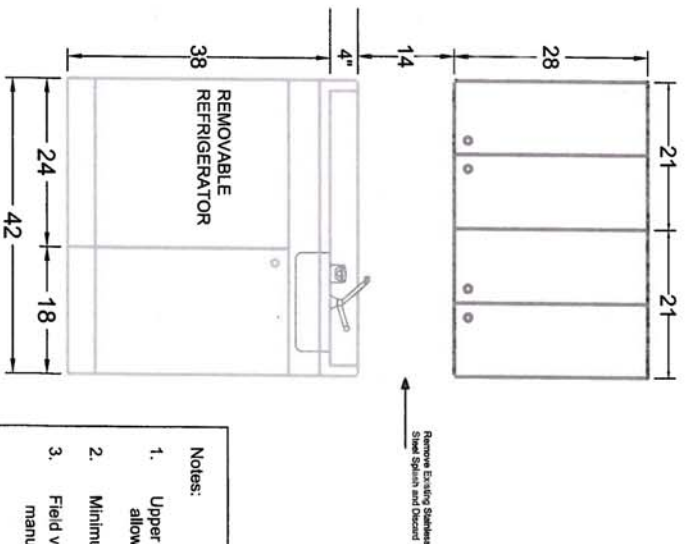
Judiciary Project Number: 1516-01-009

Judge's Chamber 18
 Scale: $1/4" = 1'-0"$



Existing 2' x 4' Fluorescent Fixture
 and Attached 3' x 4' AC Supply





- Notes:
1. Upper cabinets are installed 1" below ceiling of Kitchenette closet to allow for door opening clearance of overhead fire sprinkler.
 2. Minimum 18" clear between kitchenette counter and upper cabinet.
 3. Field verify dimension of kitchenette closet and order kitchenette manufacture accordingly. Existing kitchenettes are 41½" wide.

ACME KITCHENETTES CORP
Judiciary Project Number: 1516-01-009

DATE: 2/19/2016

DESCRIPTION

**RS9Y-42 (Refrigerator, Sink, Faucet
Hot Water Dispenser)**